

**This electronic collection of documents is provided  
for the convenience of the user  
and is Not a Certified Document –**

**The documents contained herein were originally issued  
and sealed by the individuals whose names and license  
numbers appear on each page, on the dates appearing  
with their signature on that page.**

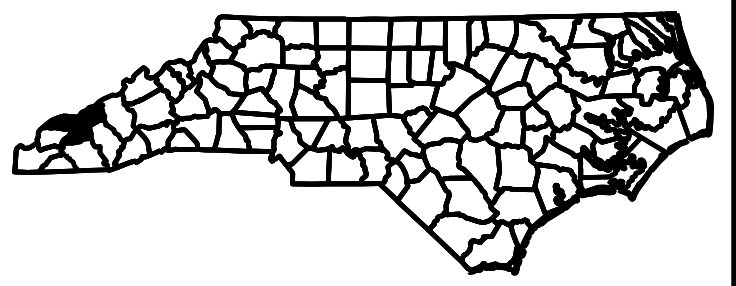
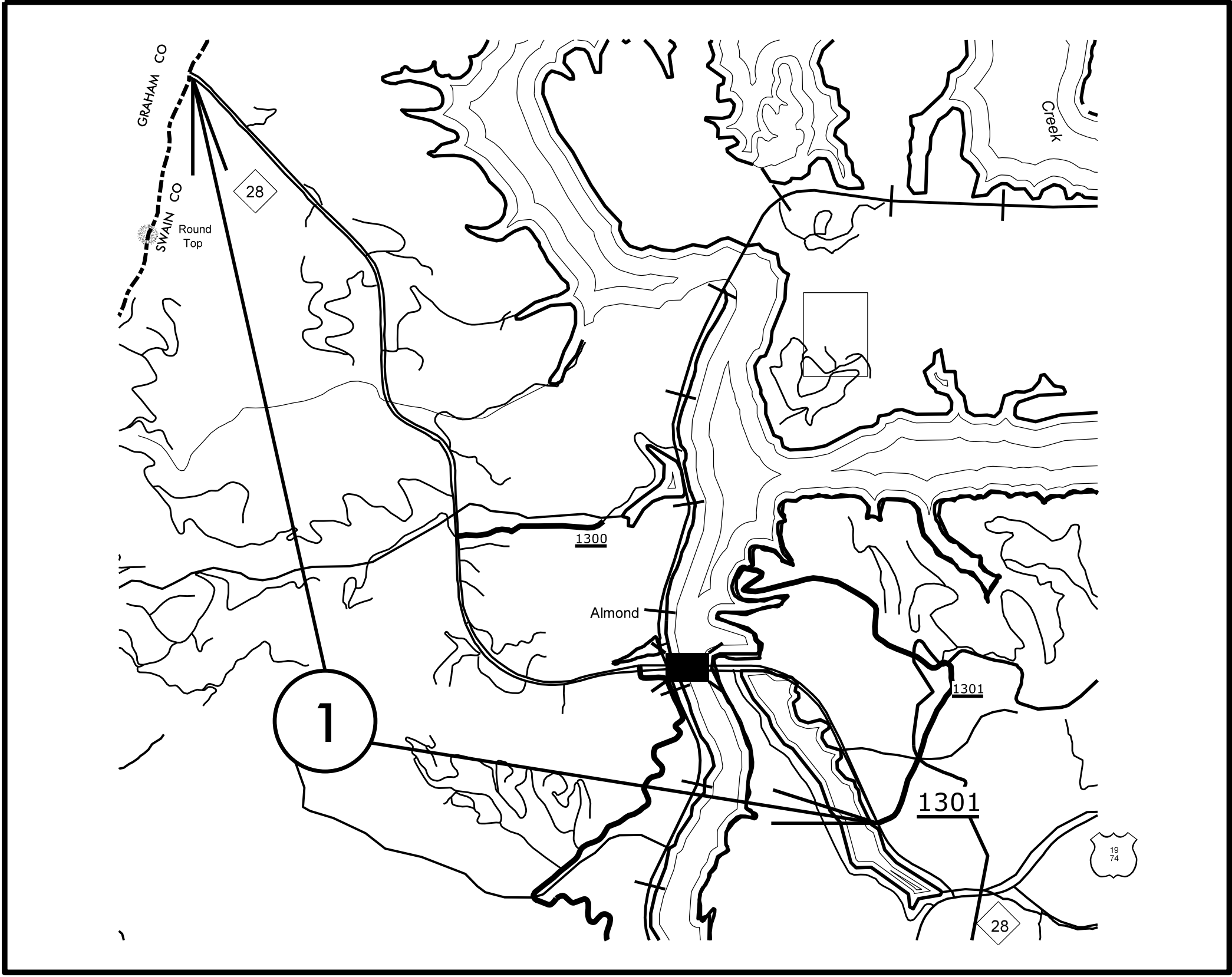
**This file or an individual page  
shall not be considered a certified document.**

TIP PROJECT: N/A

CONTRACT: DN00516

# SWAIN COUNTY

PROJECT REFERENCE NO.		SHEET NO.
2016CPT.14.04.10872.1		1
STATE PROJECT	F.A. PROJECT NO.	DESCRIPTION
2016CPT.14.04.10872		

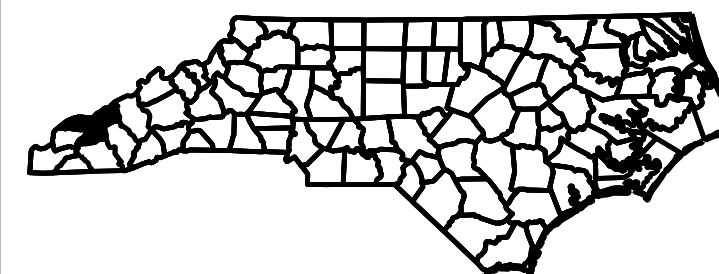
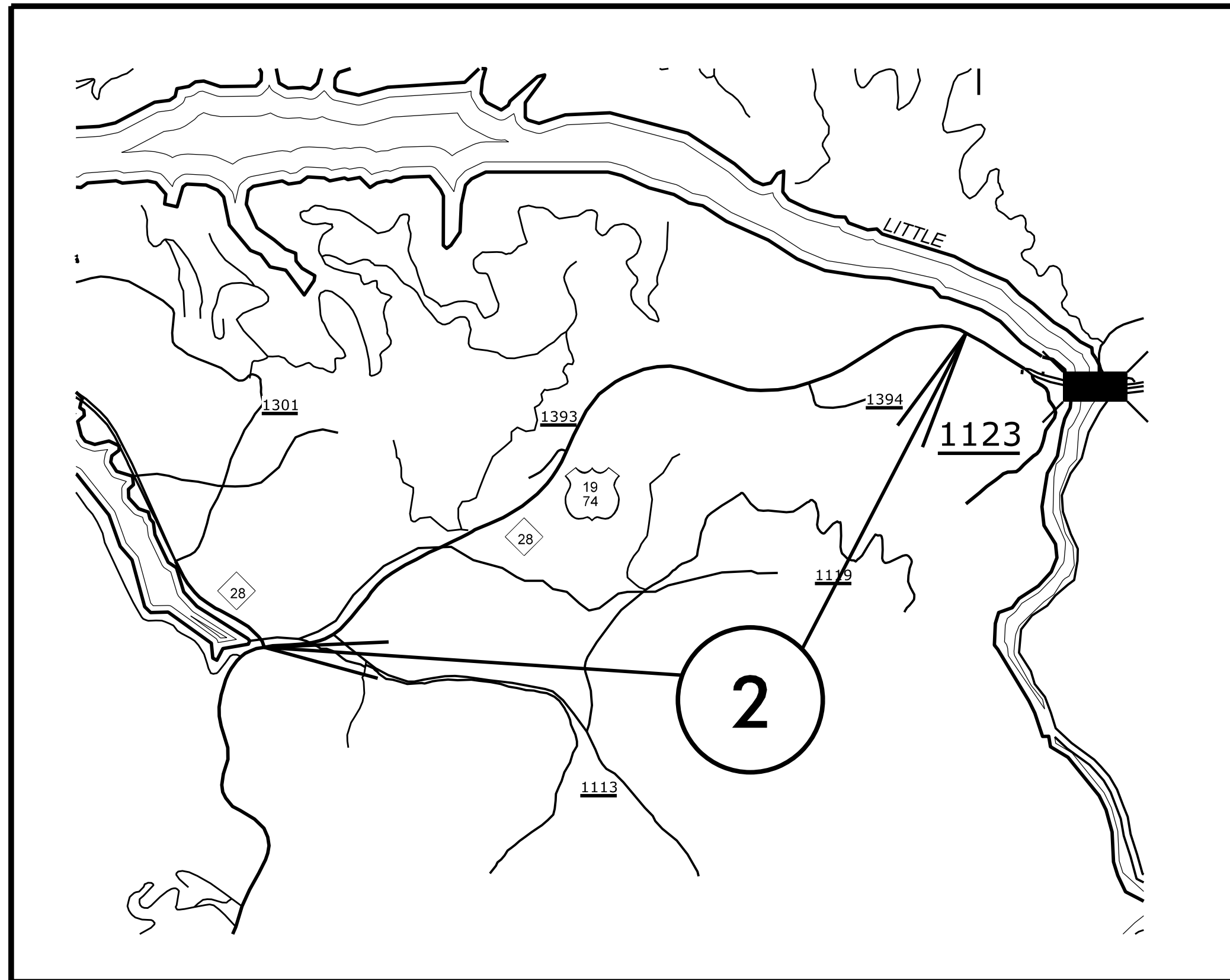


TIP PROJECT: N/A

CONTRACT: DN00516

# SWAIN COUNTY

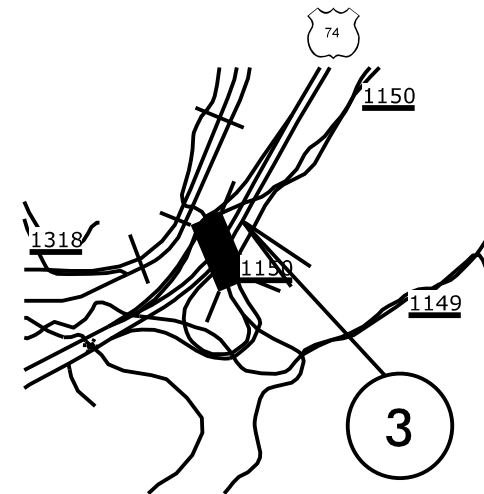
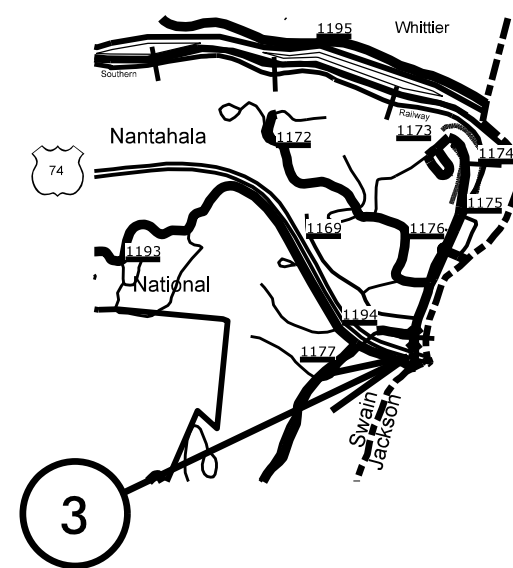
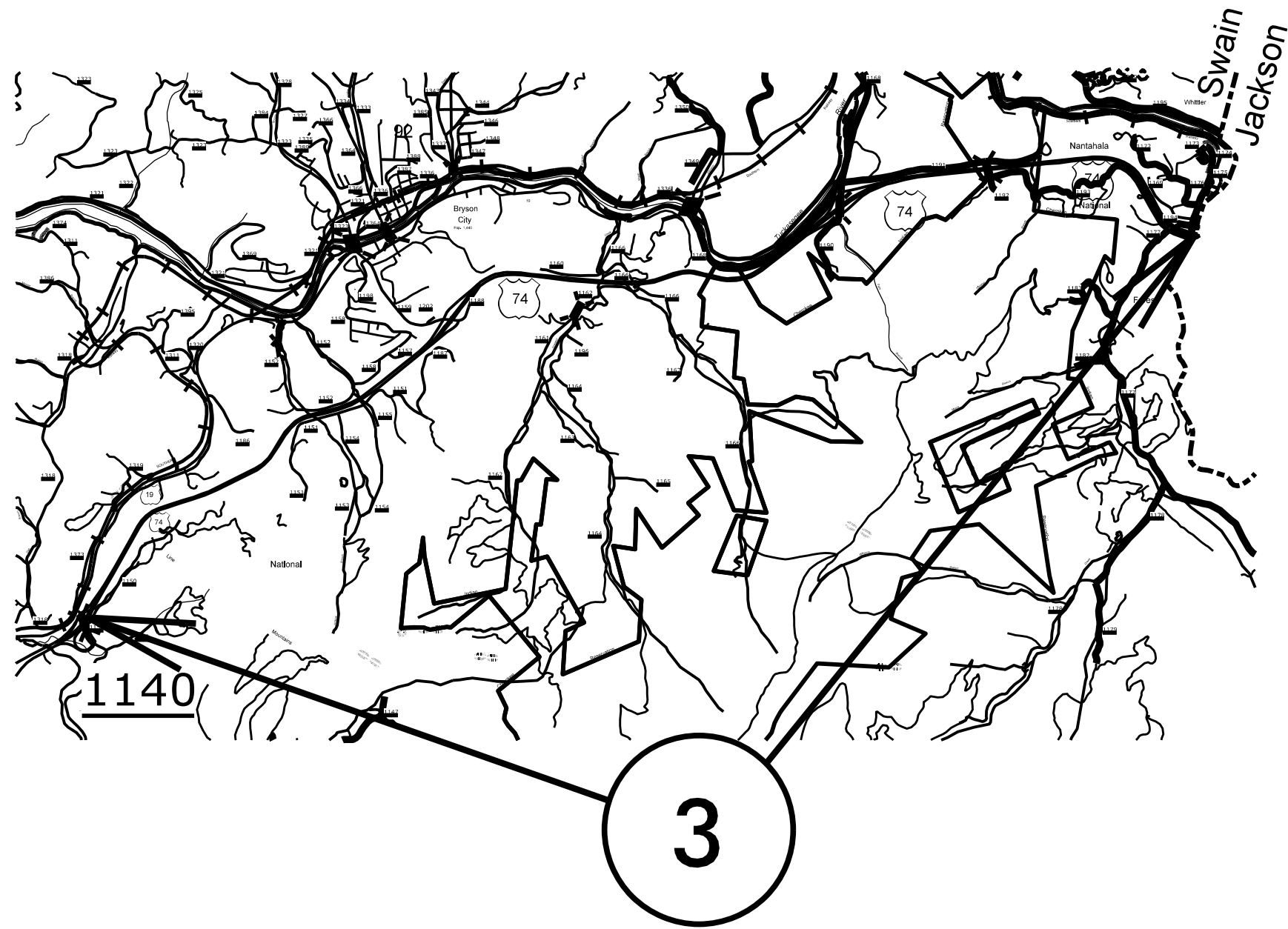
PROJECT REFERENCE NO.		SHEET NO.
2016CPT.14.04.10872.1		2
STATE PROJECT	F.A. PROJECT NO.	DESCRIPTION
2016CPT.14.04.10872		



TIP PROJECT: N/A

CONTRACT: DN00516

PROJECT REFERENCE NO.		SHEET NO.
2016CPT.14.04.10872.1		3
STATE PROJECT	F.A. PROJECT NO.	DESCRIPTION
2016CPT.14.04.10872.1		

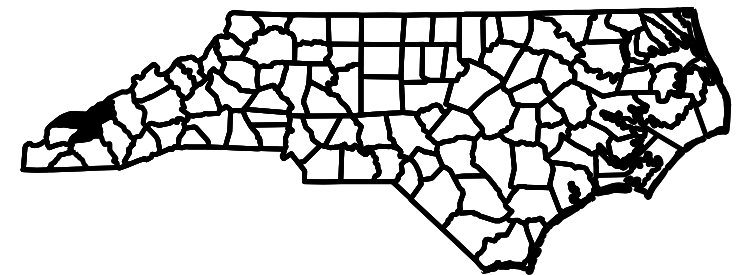
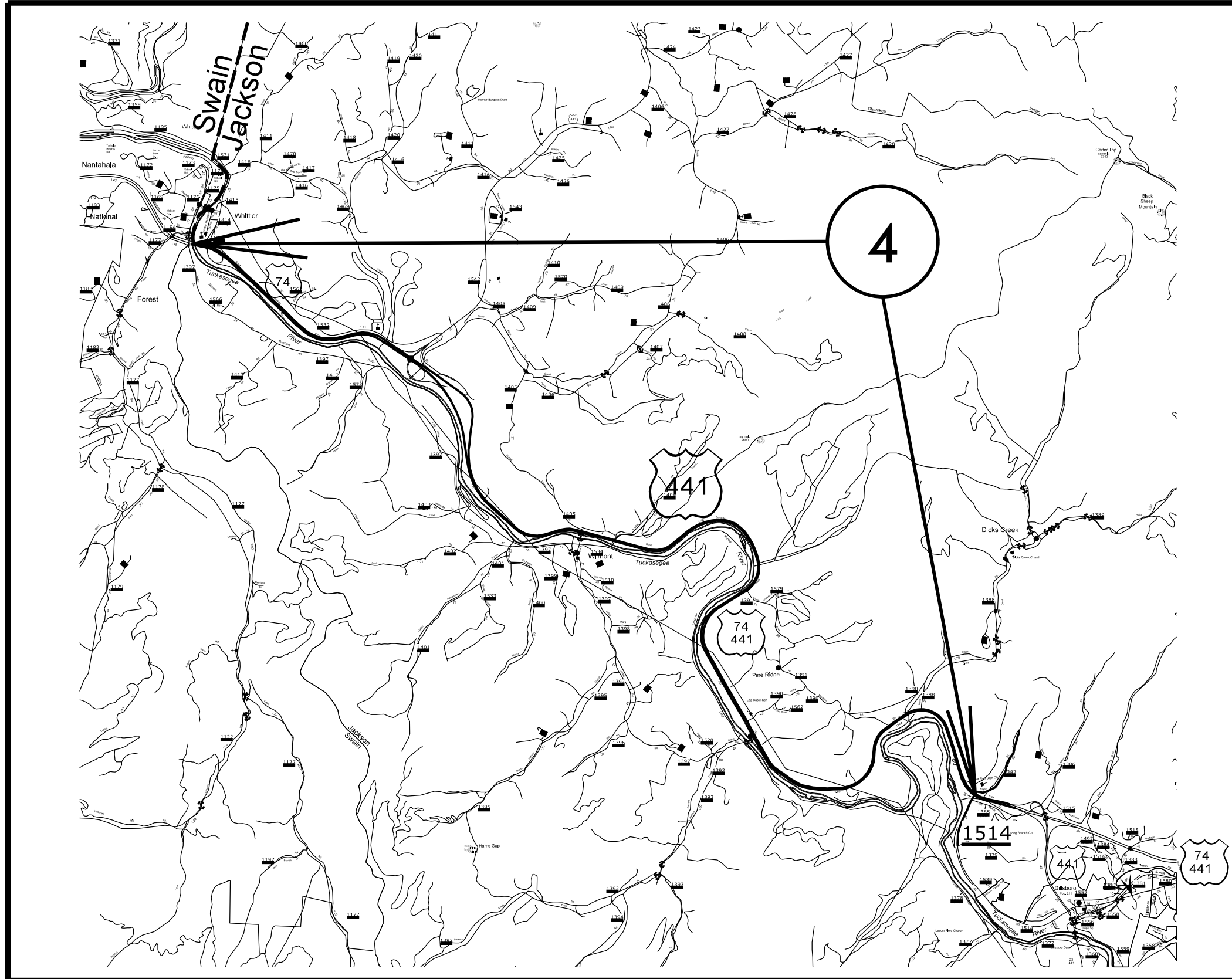


PROJECT REFERENCE NO.		SHEET NO.
2016CPT.14.04.10502.1		4
STATE PROJECT	F.A. PROJECT NO.	DESCRIPTION
2016CPT.14.04.10502.1		

# SWAIN-JACKSON CO

TIP PROJECT: N/A

CONTRACT: DN00506



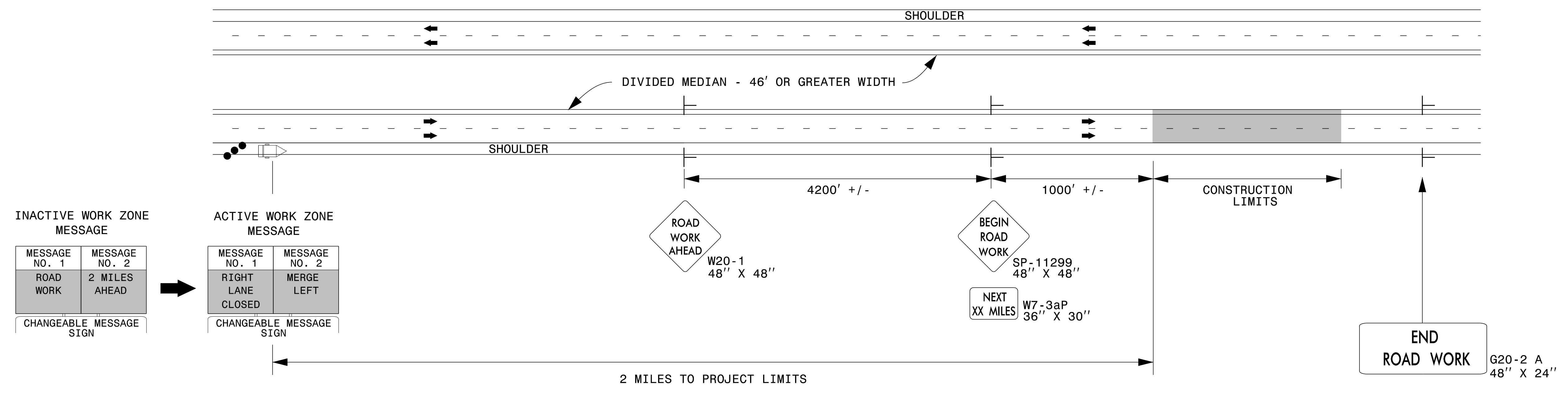
PROJECT NO.	SHEET NO.	TOTAL NO.
2016CPT.14.24.10872.1	5	
2016CPT.14.24.10502.2		

## SUMMARY OF QUANTITIES

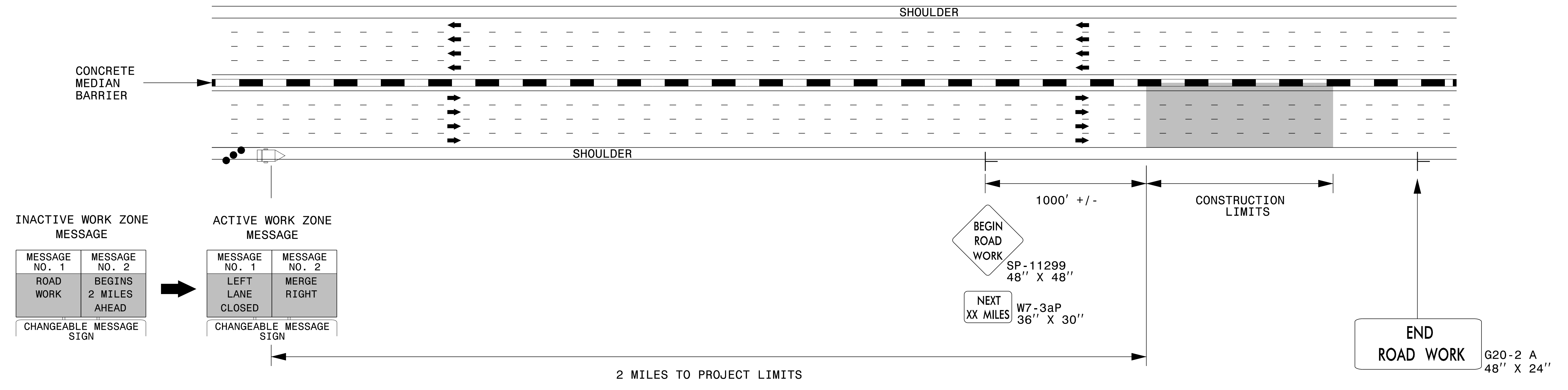
4405000000-E 457000000-N

PROJECT NO	COUNTY	MAP NO	ROUTE	DESCRIPTION	TYP NO	LANES	LANE TYPE	FINAL SURFACE TESTING REQUIRED	WARM MIX ASPHALT REQUIRED	LENGTH MI	WIDTH FT	SEALING EXISTING PAVEMENT CRACKS & JOINTS LB	PORTABLE WORK ZONE SIGN SF	TEMPORARY TRAFFIC CONTROL LS
2016CPT.14.04.10872.1	Swain	1	NC 28 EAST AND WEST BOUND LANES	FROM GRAHAM COUNTY LINE TO SR-1301	1	4	MD	NO	NO	3.074	56	4,459	288	1
<b>TOTAL FOR MAP NO. 1</b>										<b>3.074</b>		<b>4,459</b>	<b>288</b>	<b>1</b>
2016CPT.14.04.10872.1	Swain	2	US 74 EAST AND WEST AND CENTER LANE	FROM .02 MILES WEST OF SR-1123 TO END OF MULTI LANE AND NC28 INTERSECTION	1	5	MU	NO	NO	2.4	68	1,850		
<b>TOTAL FOR MAP NO. 2</b>										<b>2.4</b>		<b>1,850</b>		
2016CPT.14.04.10872.1	Swain	3	US 74 EAST AND WEST BOUND LANES	FROM US19 AND SR-1140 TO JACKSON COUNTY LINE	1	4	MD	NO	NO	7.9	56	10,500		
<b>TOTAL FOR MAP NO. 3</b>										<b>7.9</b>		<b>10,500</b>		
<b>TOTAL FOR PROJ NO. 2016CPT.14.04.10872.1</b>										<b>13.374</b>		<b>16,809</b>	<b>288</b>	<b>1</b>
2016CPT.14.04.10502.2	Jackson	4	US 74 EAST AND WEST BOUND LANES	FROM SWAIN COUNTY LINE TO SR-1514	1	4	MD	NO	NO	8.9	56	11,500		
<b>TOTAL FOR MAP NO. 4</b>										<b>8.9</b>		<b>11,500</b>		
<b>TOTAL FOR PROJ NO. 2016CPT.14.04.10502.2</b>										<b>8.9</b>		<b>11,500</b>		
<b>GRAND TOTAL</b>										<b>22.274</b>		<b>28,309</b>	<b>288</b>	<b>1</b>

## DIVIDED MEDIANS WITH WIDTHS 46' OR GREATER



## DIVIDED MEDIANS WITH WIDTHS LESS THAN 46' OR WITH PERMANENT MEDIAN BARRIER

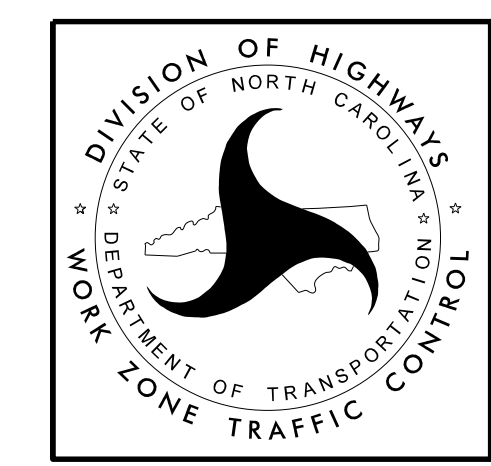


**NOTES:**

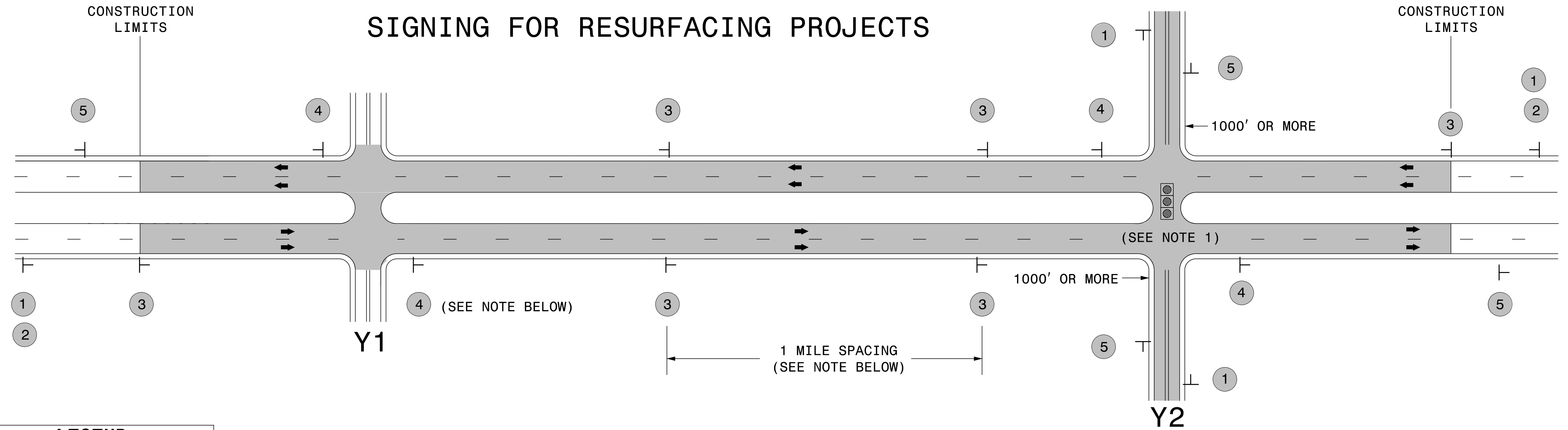
- 1) LATERAL CLEARANCE AT ALL SIGN LOCATIONS SHALL BE 6' AS MEASURED FROM THE EDGE OF PAVEMENT.
- 2) MOUNT SIGNS THAT ARE LARGER THAN 10 SQUARE FEET IN AREA ON TWO OR MORE WOOD OR U-CHANNEL SUPPORTS. PERFORATED SQUARE TUBING SUPPORT SYSTEMS MAY SUPPORT LARGER AREAS ON A SINGLE SUPPORT. FOLLOW MANUFACTURER'S RECOMMENDATIONS. THESE SYSTEMS SHALL BE NCHRP 350 COMPLIANT AND NCDOT APPROVED.
- 3) FOR MEDIAN WIDTHS LESS THAN 46' (MEASURED EDGELINE TO EDGELINE) USE THE BOTTOM DRAWING.
- 4) IF STATIONARY GENERAL WARNING SIGNS ARE USED, THEY WILL BE PAID FOR PER SECTION 104 OF THE NCDOT STANDARD SPECIFICATIONS AS EXTRA WORK.
- 5) INSTALL "ROAD WORK AHEAD" (W20-1) ALONG ENTRANCE RAMP 500' PRIOR TO RAMP TERMINAL, AND "END ROAD WORK" (G20-2a) AT THE END OF EXIT RAMP WITHIN THE WORK ZONE.
- 6) IF MILLED AREAS ARE NOT PAVED BACK BY THE END OF THE WORK DAY, PORTABLE SIGNS SHALL BE USED TO WARN DRIVERS OF THE PRESENT CONDITIONS. THESE ARE TO INCLUDE, BUT NOT LIMITED TO "ROUGH ROAD" W8-8, "UNEVEN LANES" W8-11, "GROOVED PAVEMENT" W8-15 w/MOTORCYCLE PLAQUE MOUNTED BELOW. THESE ARE TO BE DOUBLE INDICATED ON MULTI-LANE ROADWAYS WITH SPEED LIMITS 45 MPH AND GREATER AND WITH DIVIDED MEDIANS OF 46' OR GREATER. THESE PORTABLE SIGNS ARE INCIDENTAL TO THE OTHER ITEMS OF WORK INCLUDED IN THE TEMPORARY TRAFFIC CONTROL (LUMP SUM) PAY ITEM.

**LEGEND**

- CHANGEABLE MESSAGE SIGN (CMS)
- STATIONARY SIGN
- DIRECTION OF TRAFFIC FLOW
- TRAFFIC DRUM



**RESURFACING ADVANCE WARNING SIGNS FOR HIGH SPEED FACILITIES ≥ 60 MPH**



**LEGEND**  
 ┆ STATIONARY SIGN  
 ← DIRECTION OF TRAFFIC FLOW

**MAINLINE (-L-) SIGNING**

**-Y- LINE SIGNING**

SIGNING NOTES AND PLACEMENT PER DIRECTION	 	<p>PLACE 1000' PRIOR TO BEGINNING OF CONSTRUCTION LIMITS. ONLY USED ON -Y- LINES IF RESURFACING LIMITS EXTEND 1000' ALONG -Y- LINE.</p> <p>#2 SIGN ONLY USED WHEN RESURFACING LIMITS ARE 2 OR MORE MILES IN LENGTH. ROUND UP TO NEXT WHOLE NUMBER. (NO FRACTIONAL OR DECIMAL NUMBERS)</p>	<p><b>NO REQUIRED STATIONARY SIGNING FOR THE FOLLOWING -Y- LINE CONDITIONS:</b></p> <ol style="list-style-type: none"> <li>1) LESS THAN 1000' OF RESURFACING ALONG -Y- LINE</li> <li>2) SUBDIVISION ROADS</li> <li>3) DEAD END ROADS</li> </ol> <p>WHEN PAVING/CONSTRUCTION ACTIVITIES PROCEED ACROSS AN UNSIGNED -Y- LINE, ADVANCE WARNING PORTABLE SIGNS SHALL BE USED ALONG THE -Y- LINE AS SHOWN BELOW. REMOVE UPON COMPLETION OF WORK.</p> <div style="display: flex; justify-content: space-around;"> <div style="text-align: center;">   <small>W20-1 48" X 48"</small> </div> <div style="text-align: center;">   <small>W20-7 A 48" X 48"</small> </div> </div> <p>PLACED 500' IN ADVANCE OF FLAGGER. PLACED 250' IN ADVANCE OF FLAGGER.</p> <p><b>NOTES:</b></p> <ol style="list-style-type: none"> <li>1) MAY USE LAW ENFORCEMENT TO CONTROL TRAFFIC AT SIGNALIZED INTERSECTIONS AS DIRECTED BY THE ENGINEER. PROVIDE PORTABLE "ROAD WORK AHEAD" (W20-1) SIGNS 500' IN ADVANCE ALONG BOTH APPROACHES FROM THE SIDE STREETS WHEN PAVING PROCEEDS THROUGH THE INTERSECTION.</li> </ol>
		<p>PLACE INITIALLY AT THE CONSTRUCTION LIMITS AND SPACED 1 MILE APART THEREAFTER. IF NO -Y- LINES EXIST, PLACE 2ND SET 1/2 MILE FROM THE CONSTRUCTION LIMITS AND THEN SPACE 1 MILE THEREAFTER.</p>	
		<p>THESE ARE FOR -Y- LINES THAT ARE "THROUGH" ROADWAYS. DEAD END AND SUBDIVISION ROADS ARE NOT "THROUGH" ROADWAYS. INSTALL 500' +/- FROM EACH -Y- LINE APPROACH AS SHOWN ABOVE. FOR MULTIPLE -Y- LINES THAT ARE SEPARATED BY 0.25 MILES OR LESS, TREAT AS A SINGLE UNIT AND INSTALL WITHIN 500' OF EACH APPROACH. A MAXIMUM OF 2 SIGN SETS PER MILE. DO NOT INSTALL WHEN -Y- LINES ARE WITHIN 0.5 MILES FROM "END ROAD WORK" SIGN.</p>	
		<p>PLACE 500' FOLLOWING THE END OF CONSTRUCTION LIMITS.</p>	

3/23/2015  
 C:\Users\rmgarrrett\Downloads\Resurfacing\_AdvWarn\_Ltr-Su\_Shldr.dgn  
 User:rmgarrrett

**RESURFACING  
 ADVANCE WARNING SIGNS  
 FOR RURAL AND SUBURBAN  
 MULTI-LANE ROADWAYS  
 W/ SHOULDER SECTIONS**